

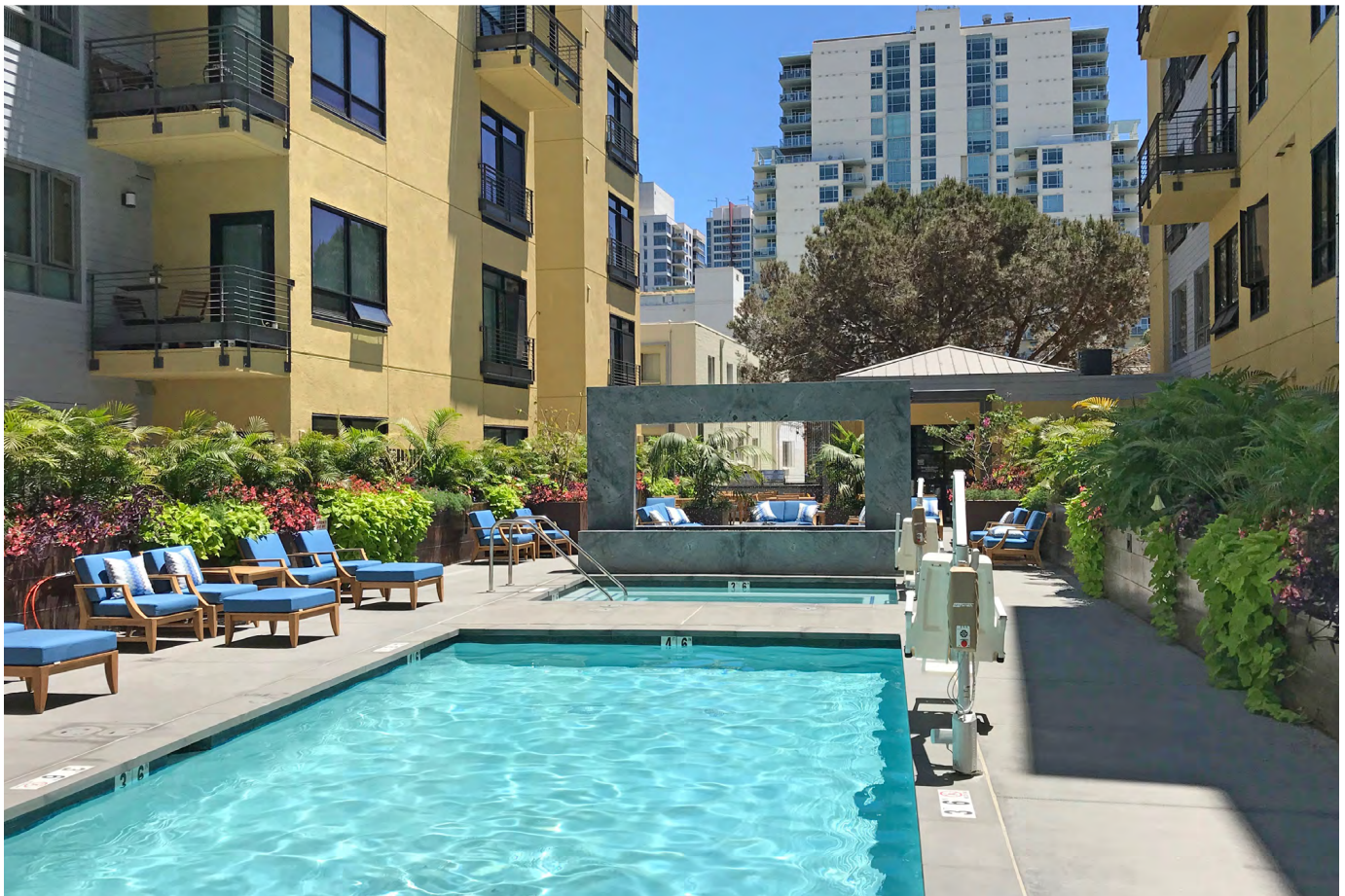
VersiCell®

Materials: **100% recycled polypropylene**



VersiCell is a sub-surface drainage panel that provides the ultimate combination of strength and water flow capacity. The modular, connectable panels are frequently used in a variety of installations where fast, high-volume water flow is critical. In addition to sub-surface drainage, VersiCell is frequently used in place of heavy gravel aggregates for waterproofing membrane protection, for heat and sound insulation on structures, as a drainage channel, and on subterranean walls to prevent hydrostatic pressure buildup.

Typical applications include greenroofs, under pavers on terraces and patios, subterranean building protection, in on-structure bioretention areas, or as drainage layers inside large planters. Made of 100% recycled polypropylene, rigid panels are available in 1-3/16" (30mm) and 3/4" (20mm) thicknesses. VersiCell is highly inert, and won't break down or crush over the life of a project.



- Modularity makes for fast, easy installation - rigid & flexible panels are trimmed in place
- 100% Post-consumer recycled plastic - eco-friendly
- Superior strength and higher flow than typical drainage mats
- Shovel-proof (unlike most other drainage products)

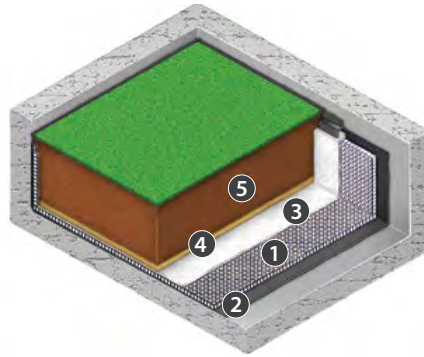


Typical VersiCell® Applications

Planters and Greenroof

Use to line a planter or under a greenroof.

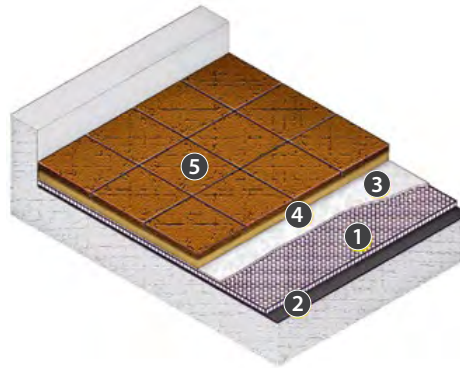
1. VersiCell®
2. Waterproofing
3. Geotextile
4. Coarse Sand
5. Planting Soil



Plaza and Pavers

Use on a plaza deck for drainage under pavers.

1. VersiCell®
2. Waterproofing
3. Geotextile
4. Sand
5. Pavers



Subterranean Wall Protection

1. VersiCell
2. Waterproofing Membrane
3. Landscape Fabric
4. Soil

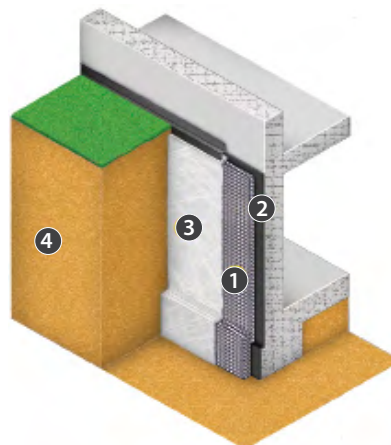




Photo Credit - Roofmeadow

VersiCell®

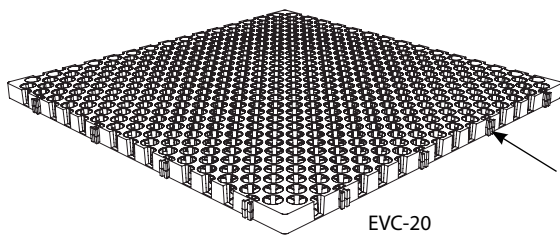
VersiCell's unique construction involves the ultimate combination of strength and water flow capacity. It's long been used in critical applications where standing water can't be tolerated. The panels will support cast-in-place planter walls to allow free drainage and ensure minimal long-term maintenance.

VersiCell is 100% post-consumer recycled polypropylene in 3/4" (20mm) and 1-3/16" (30mm) thicknesses. It's highly inert, and the incredibly strong design won't break down over the life of the project. VersiCell must be used in conjunction with a non-woven drainage fabric, by others.

VersiCell® Simply the best sub-surface drainage panel

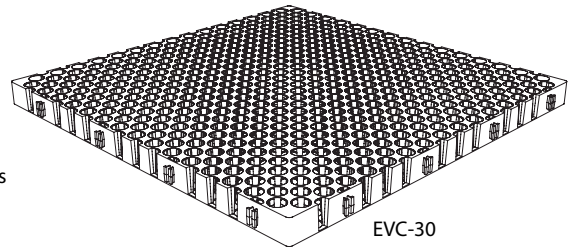
Model No.	Size	Weight (lbs/sq. ft.)	Comp. Strength (lbs-f/sq ft)	Discharge Capacity @ 1% gradient
EVC-20	19.625" x 19.625" x 0.787"h	0.41	20,900	1.32 gal/ft.s
EVC-30	19.625" x 19.625" x 1.18"h	0.51	20,900	1.32 gal/ft.s

Honeycomb design results in high compressive strength with minimum weight.



EVC-20

Side Tabs connect panels



EVC-30